

THE SPANISH INSTITUTE



Doves in Hyde Park

ENRIQUE SANCHEZ LEAL

LONDON
1991



ENRIQUE SANCHEZ LEAL

BORN IN MALAGA (SPAIN) 1941

A PLEIN AIR PAINTER

*«Do as you wish,
what you see,
what you feel».*

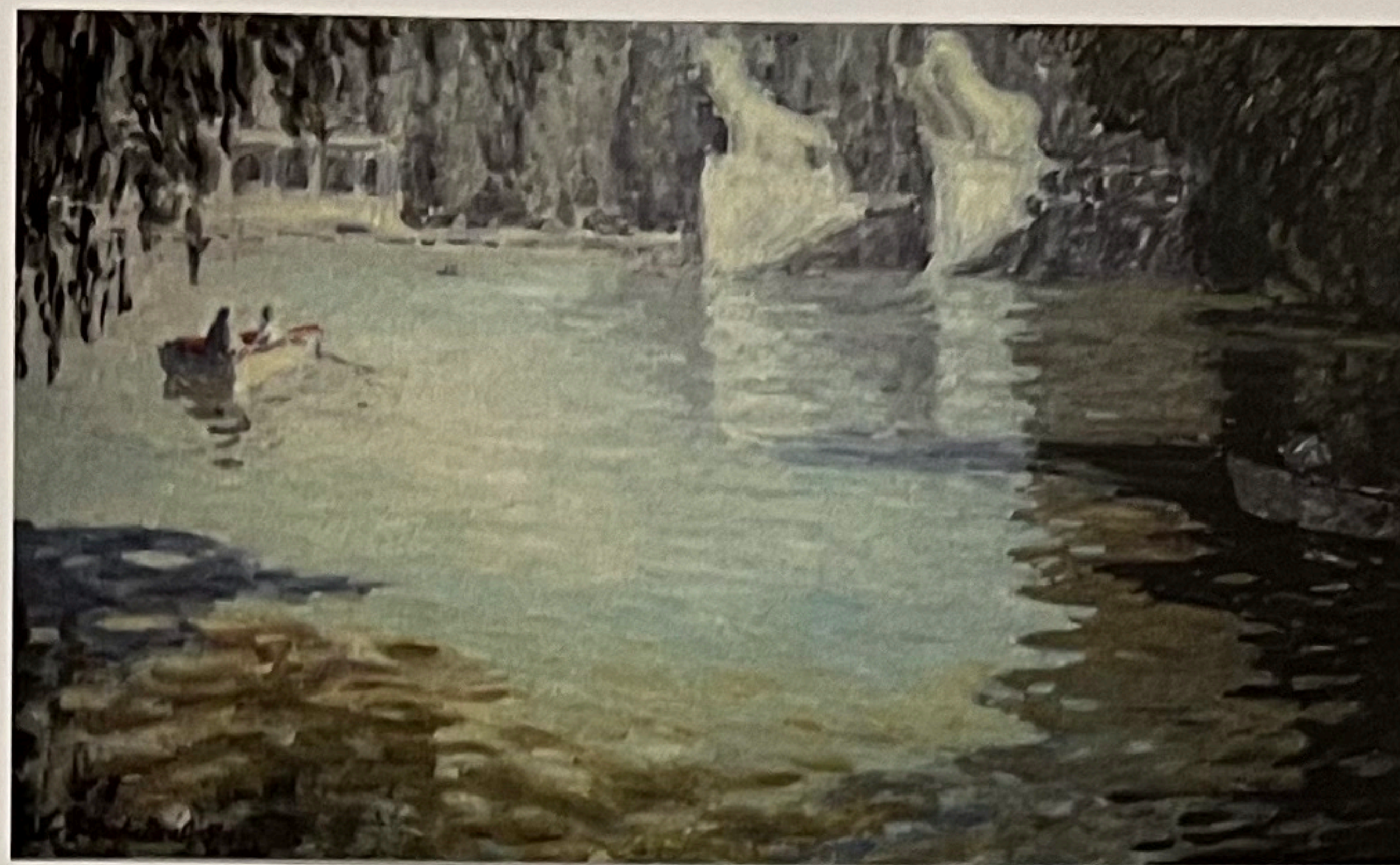
Courbet

Each time I think of the periodic need for painting to return to Nature in order to save itself (as it is from time to time on the verge of death through repetition and the isolation of the studio), I turn back to the mythological lesson afforded by Antaeus, son of the Earth who, when about to expire the grip of Hercules, touched his mother's body with his hands and instantly recovered his strength and the force of life. Painting was about to expire at the hands of David and Géricault with their grand theatricality, and of Ingres with his frigid perfection, when Theodore Rousseau and his friends went to the Barbizon forest to save it, planting their easels in situ amongst noble trees, whose leafy sensuousness filtered the sun as does a prism—greens, blues, reds, purples, yellows and oranges— without the forced contrast of chiaroscuro, joyously violating the rules of perspective, which ceased to be ruled by geometry to become a perspective, which ceased to be ruled by geometry to become a vivid interplay of colours and tonalities with the picture plane and the horizon... There it was, one might say: Impressionism.

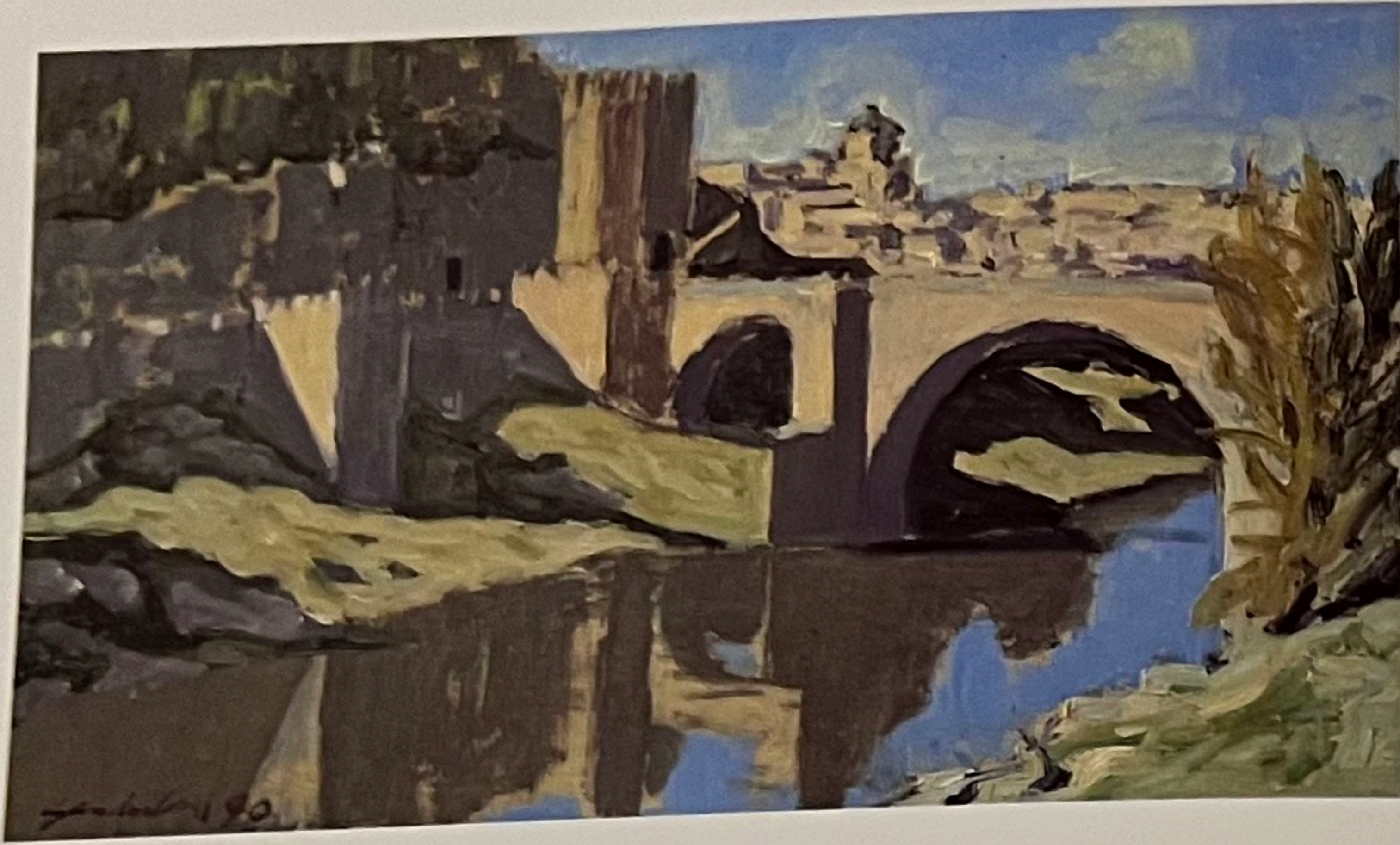
Modern impressionism having just discovered in Madrid the regattas of Argenteuil and the snows of Veteuil, painted in 1872-79 by the ultra-modern Claude Monet, spiritual father (or at least godfather) of our Sánchez-Leal, yet another innocent lover of sunrises and sunsets, whose paintings, vibrant with sincerity and feeling, revive past joys of living, which we find once again like some surprise gift through these soft yet vivid landscapes of deep love and spontaneity: liquid light to bathe our eyes.

A. M. CAMPOY

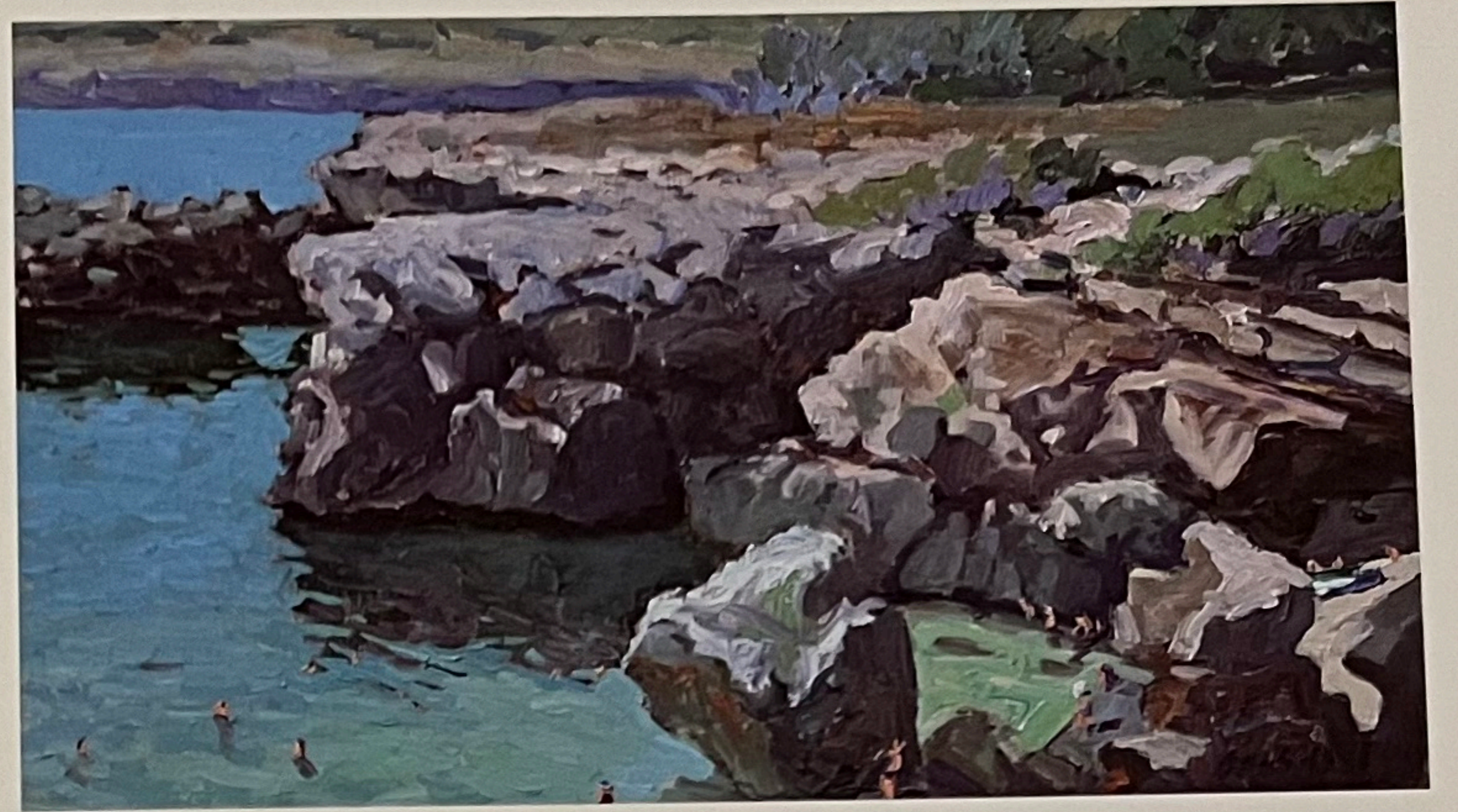
Association International Critics d'Art



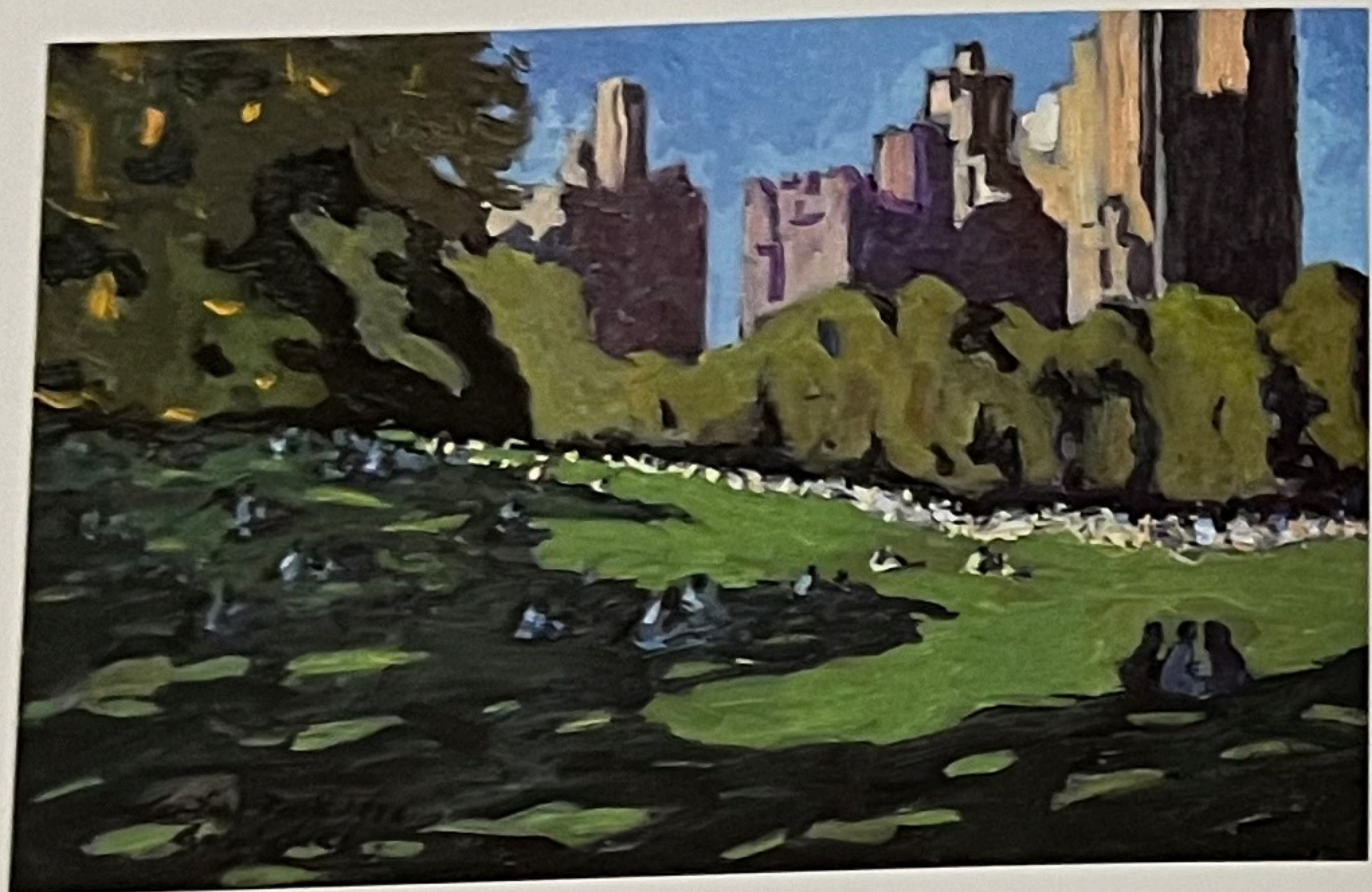
Boating in the Retiro, Madrid.



The Alcántara bridge. Toledo.



Portocristo coast. Mallorca.



Central Park. New York.



Henry Moore at Hyde Park. London.



Mountains of Gredos. Avila.

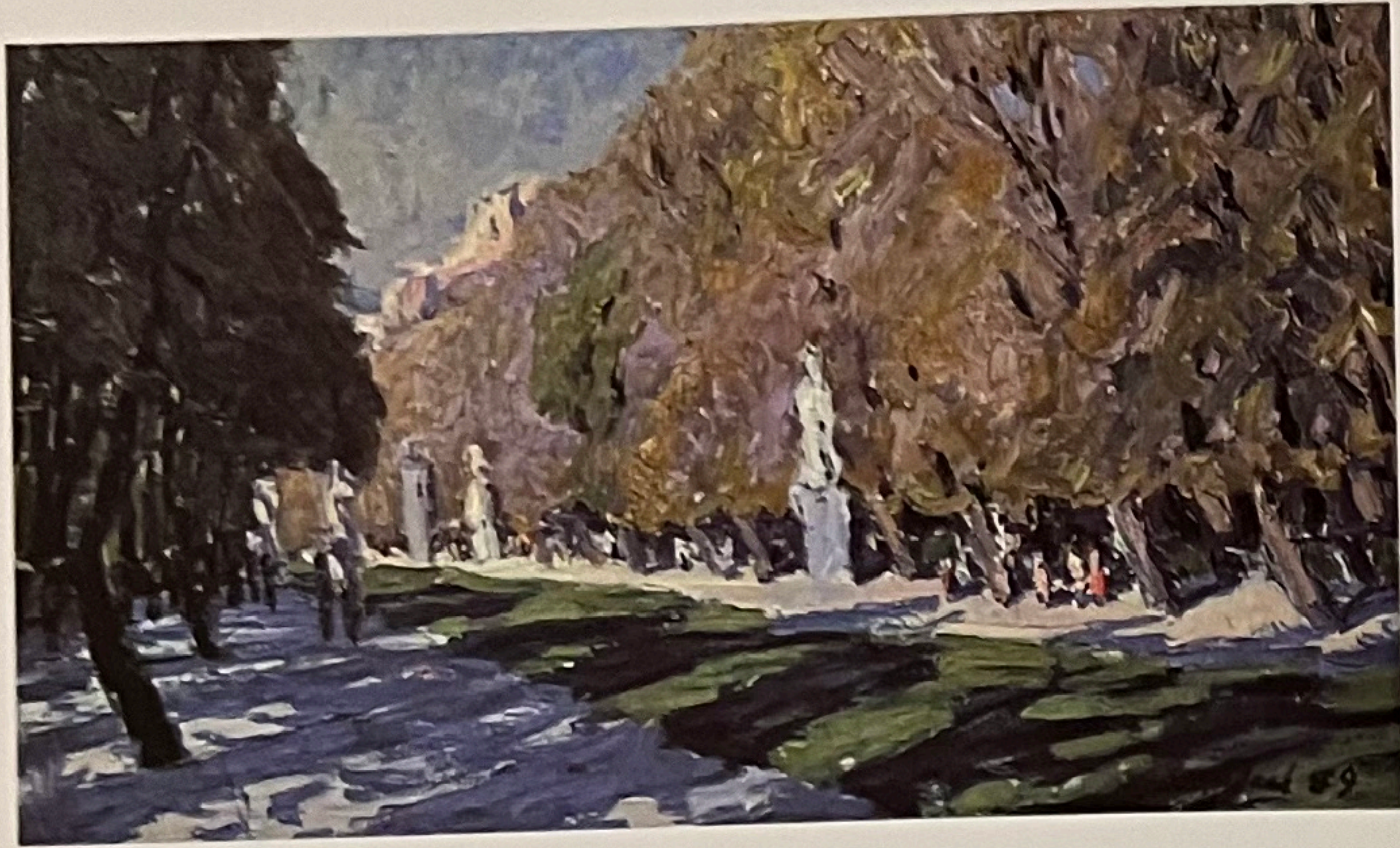
Beech trees of. Vitoria.



Blossoming almond trees. Málaga.



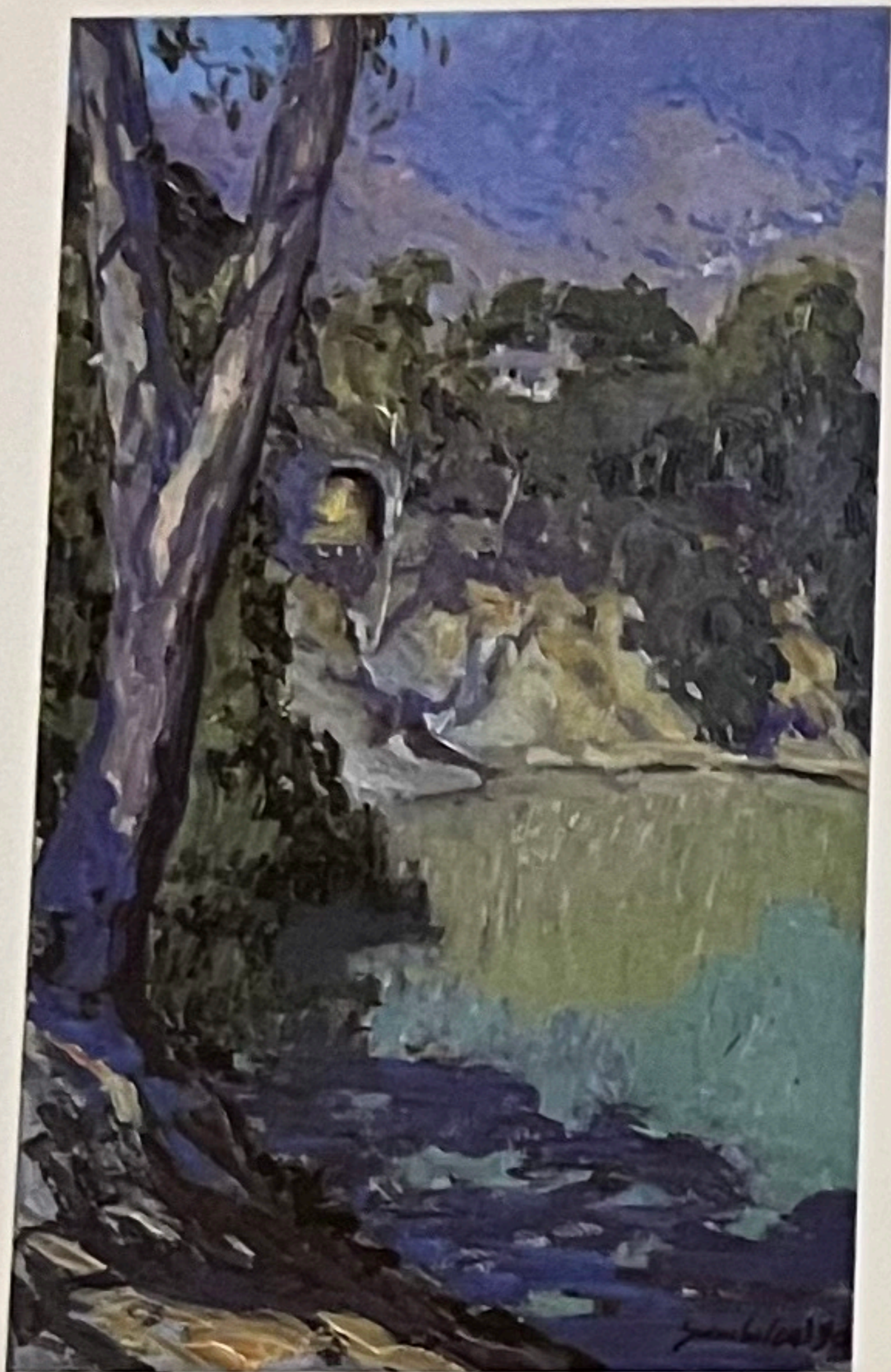
Pozuelo. Madrid.



Statues in the Retiro. Madrid.



Willow on the pond. Madrid.



Pantano el agujero. Málaga.



The artist in Central Park, New York.

INDIVIDUAL EXHIBITIONS

1978	MADRID	— Galería Rincón de Arte Meliá Castilla
1979	MADRID	— Galería Espalter
1979	MADRID	— Galería Rincón de Arte Meliá Castilla
1980	MALAGA	— Liceo de Málaga
1980	MADRID	— Galería El David
1981	MADRID	— Galería El David
1981	CORUÑA	— Galería Guiannini
1982	CACERES	— Galería Colegios Médicos
1982	SORIA	— Caja Rural
1982	MALAGA	— Galería Miguel Angel
1983	MADRID	— Galería Kandinsky
1983	MADRID	— Galería Loring
1984	MALAGA	— Galería Miguel Angel
1984	MADRID	— Galería Loring
1985	MADRID	— Salón Cano
1986	MALAGA	— Galería Benedito
1986	GIJON	— Galería Bellas Artes
1987	MADRID	— Galería Infantas
1989	MADRID	— Galería Infantas
1990	MADRID	— Galería Marisa Almazán
1991	LONDON	— The Spanish Institute



Almond trees. Málaga.

THE SPANISH INSTITUTE

102 Eaton Square
LONDON SW1
Tel. 071. 235 - 1484

INAUGURATION

Thursday 7th March 1991 at 6.30 p.m.

The exhibition will be open to the public until March 22nd

LONDON 1991

Hours of opening: Daily from 10 a.m. to 6 p.m. Monday to Friday